

Stock Market Summary

14-Jun-10



Index	Date	Index	Net Ch. pt	Net Ch %	High	Low
<u>KSE 100</u>	11-Jun-10	9,471.12			9,499.61	9,379.78
	14-Jun-10	9,229.60	-241.52	-2.62	9,471.12	9,131.17
<u>KSE 30</u>	11-Jun-10	9,412.29			9,456.69	9,314.92
	14-Jun-10	9,134.63	-277.66	-3.04	9,392.88	9,035.77

Total Scripts 548 **Actives** : 407 **Inactives:** 141 **Plus:** 84▲ **Minus:** 448▼ **Unchanged:-**125●

Volume Leaders



Bears lead the Market*

Previous Volume *		71,117,793	Current Volume *		94,796,809
Sno #	Company Name	Open Rs.	Close Rs.	% Price Chg.	Volume
1	Lotte Pakistan Ltd	9.32	8.73	-6.33	12,231,185
2	WorldCall Telecom Ltd.	3.51	3.16	-9.97	5,350,009
3	TRG Pakistan Ltd	4.96	4.57	-7.86	5,105,207
4	Arif Habib Securities Ltd	33.87	32.52	-3.99	4,358,627
5	Jahangir Siddiqui and Company Ltd.	12.10	11.15	-7.85	4,325,333

Major Movers On % Basis

Top 10 Gainers

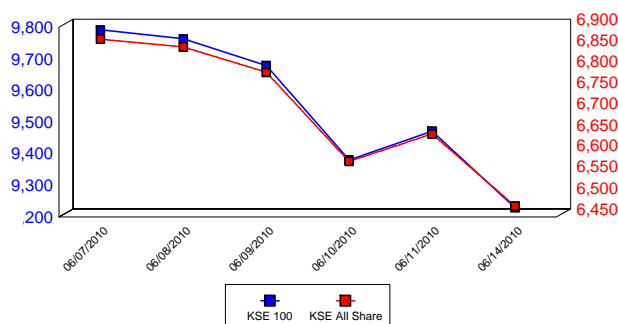
Company Name	% Price Chg.
Trust Modaraba	61.54 ▲
AL-Azhar Textile Mills Ltd.	55.88 ▲
Ishaq Textile Mills Ltd.	35.59 ▲
Land Mark Spinning Industries Ltd.	33.33 ▲
Service Fabircs Limited.	28.00 ▲
Frontier Ceramics Limited	19.94 ▲
Dewan Mushtaq Textile Mills Limited	18.46 ▲
Saudi Pak Leasing Co. Ltd.	18.46 ▲
Colony Sugar Mills	18.01 ▲
KASB Modaraba	17.78 ▲

Top 10 Losers

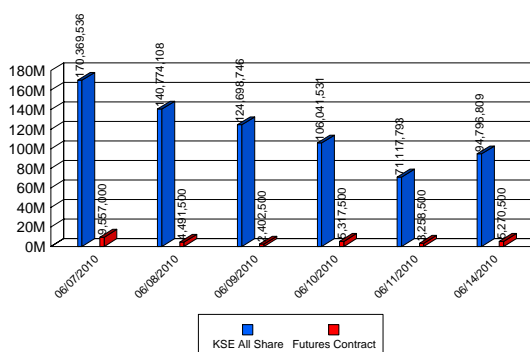
Company Name	Price Chg.
Tristar Ployester Limited	-56.38 ▼
IBL Modaraba First	-45.71 ▼
Brothers Textile Mills Ltd.	-43.82 ▼
Capital Assets Leasing Corp. Ltd.	-43.00 ▼
Pak Modarba 1st	-41.90 ▼
Shahpur Textile Mills Limited.	-40.00 ▼
Trust Inv. Bank Ltd	-40.00 ▼
Mandviwala Mauser Plastic Ind. Limited.	-39.17 ▼
D. M. Textile Mills Ltd.	-38.14 ▼
(Colony) Thal Textile Mills Ltd	-38.14 ▼

Weekly Performance

Index



Volume



* Includes Futures Contract

This report is purely system-generated & is provided for information purposes only. It is not checked for accuracy. AHIML will not be responsible for any error or omission of data. The source of all data is the KSE website.

Arif Habib Investments Ltd (Formerly: Arif Habib Investment Management Ltd)

Asset Management Database

© Copyright 2009 AHIL . All Rights Reserved.

Major Movers On Price Basis

Top 10 Gainers

	Rs. Chg	
Unilever Pak Foods Ltd	36.00	▲
Rafhan Maize Products Ltd.	20.00	▲
UniLever (Pakistan) Ltd.	16.31	▲
Fazal Cloth Mills Ltd .	13.49	▲
Bhanero Textile Mills Ltd.	9.66	▲
Shezan International Ltd.	4.82	▲
Pakistan Services Ltd.	2.69	▲
Baba Farid Sugar Mills Limited	1.39	▲
Ittehad Chemicals	1.27	▲
Salfi Textile Mills Limited	1.00	▲

Top 10 Losers

	Rs Chg.	
Wyeth Pakistan Ltd.	-52.98	▼
Nestle Milkpak Ltd.	-47.57	▼
Siemens Pakistan Engineering Co. Ltd.	-36.61	▼
Millat Tractors Ltd.	-16.21	▼
Service Industries Ltd.	-10.72	▼
Bata Pakistan Ltd.	-10.00	▼
MCB-JUN	-9.67	▼
MCB Bank Ltd.	-9.64	▼
Atlas Battery Limited	-9.40	▼
Clariant Pakistan Limited	-8.20	▼

Daily Announcement

Company Name	Date	Time	Description
Union Insurance	14-Jun-10	15:34:22	EPS = (0.11)
Union Insurance	14-Jun-10	15:34:22	PROFIT/LOSS AFTER TAXATION RS. IN MILLION (0.883)
Union Insurance	14-Jun-10	15:34:22	PROFIT/LOSS BEFORE TAXATION RS. IN MILLION (0.883)
Union Insurance	14-Jun-10	15:34:22	FINANCIAL RESULT FOR THE FIRST QUARTER ENDED 31/0
Union Insurance	14-Jun-10	15:37:32	EPS = (0.64)
Union Insurance	14-Jun-10	15:37:32	PROFIT/LOSS AFTER TAXATION RS. IN MILLION (5.262)
Union Insurance	14-Jun-10	15:37:32	PROFIT/LOSS BEFORE TAXATION RS. IN MILLION (5.262)
Union Insurance	14-Jun-10	15:37:32	FINANCIAL RESULT FOR THE YEAR ENDED 31/12/2009

Market Comments

This report is purely system-generated & is provided for information purposes only. It is not checked for accuracy. AHIML will not be responsible for any error or omission of data. The source of all data is the KSE website.